

Santa Ana Historical Preservation Society Newsletter

President: Scott Morgan • Spring 1989 • Editor: Diann Marsh

1989 VICTORIAN HOME TOUR WE NEED YOUR HELP!

Please sign up to help at the 1989 Victorian Home Tour/Restoration and Antique Show on April 29th and 30th. We need help with providing cookies (homebaked or purchased), helping serve refreshments, and doing 3-hour shifts as docents. This is our major fundraiser for the year and we need your help to make it a success. Please call Diann Marsh at 541-2441 if you can help in any of these areas.

PRESIDENT'S MESSAGE

Approximately 50 members of the Santa Ana Historical Preservation Society attended the organization's annual dinner at the Revere House on February 1st. In addition to the
(continued on next page)



SPRING 1989

HISTORIC PRESERVA-
TION AWARD

HERVEY-FINLEY
BUILDING

Constructed 1899

204-210 E. 4th St.

(Details on
next page)

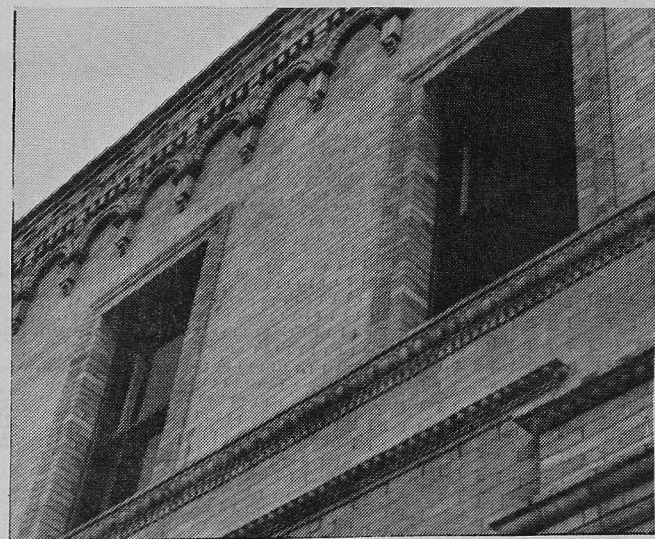
previously-announced historic preservation awards, we were honored to present engraved plaques to four of our members who have served on the S.A.H.P.S. Board of Directors for over 10 years. They are: Max and Connie Becker, Judy Davis, David Fraunfelder and Royal Spurrier. Certificates, provided by Supervisor Stanton's office, were given to several members who have been loyal supporters of our organization for many years. The Board presented me with a pink Camellia bush which is already blooming in my yard. We finished the evening by watching the new video produced by the Orange County Historical Commission, Portraits of Progress. This colorful fast-paced panorama of Orange County's history illustrates the significant places and events which helped to shape our county.

Special thanks to Royal Spurrier, Max Becker, and Connie Becker, who spent much of the day last Saturday cleaning the house interior, the carriages, and scaping, sanding, and repainting the Howe-Waffle House porches, gazebo floor, and carriage house ramp. These three dedicated and tireless volunteers have been giving freely of their time and talents to restoring the Dr. Howe-Waffle House for many years. Saturday was just another example of their dedicated service. A big thank you from all of us.

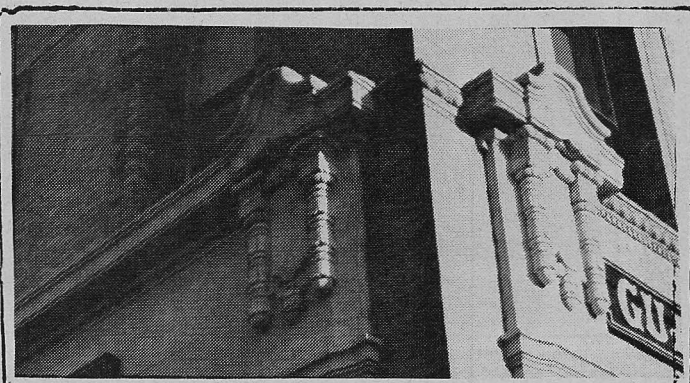
Thanks also to our very dedicated and talented Diann Marsh, who was in charge of the De Camera Society's tour of the Howe-Waffle House last Sunday in advance of their Chamber Music in Historic Sites concerts at the Bowers Museum, the Church of the Messiah, and the Old County Courthouse. We were pleased to provide refreshments and give tours to this very distinguished group of architectural historians and chamber music aficionados.

Don't forget that the Howe-Waffle House is open for free tours every Tuesday from 10:30 a.m. to 1:30 p.m. in conjunction with tours of the Old County Courthouse, and again on the third Saturday of each month from 11:00 a.m. to 2:00

HERVEY-FINLEY BUILDING



Our organization is proud to give our Spring 1989 Historic Preservation Award to the Hervey-Finley Building at 202-210 E. Fourth Street. The two-story structure is really two buildings, joined by a common wall and located under one facade. Hugh Todd was the original architect for the whole building. Chris McNeil and J. W. Blee, two prominent local builders, each acted as contractors for one half. The eastern-most section is still topped by the original decorative parapet (shown above). A detail of the unique corner decoration is shown below. Long-time Santa Ana residents will remember the building as the home of the Commercial National Bank from 1928 until 1952. Congratulations to the owner, Irving Chase, the architect, Wayne Donaldson, and the City of Santa Ana staff.



1989 SANTA ANA
VICTORIAN HOME TOUR,
ANTIQUE AND
RESTORATION SHOW

SATURDAY AND SUNDAY
APRIL 29th and 30th

11:00 a.m to 5:00 p.m.

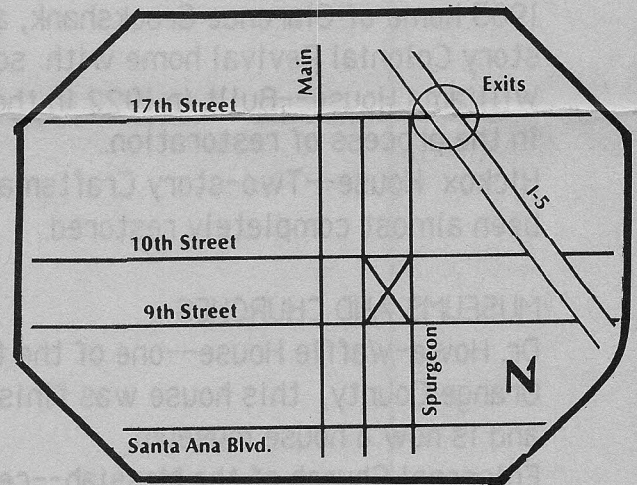
A DONATION OF \$8 PER ADULT
AND \$1 PER CHILD INCLUDES
REFRESHMENTS AND A TOUR
BOOKLET

(INTERIORS OF 14 BUILDINGS)

(see other side)

TICKETS AVAILABLE DAYS OF TOUR
AT RESTORATION FAIR SITE (BUSH AT
NINTH) OR BY MAIL TO:

S. A. H. P. S
120 CIVIC CENTER DRIVE WEST
SANTA ANA, CA 92701



SPONSORED BY THE SANTA ANA HISTORICAL PRESERVATION SOCIETY AND
THE HISTORIC FRENCH PARK ASSOCIATION

I would like ___ tickets for the Santa Ana Victorian Home Tour/Antique and
Restoration Show and am enclosing a \$_____ donation.

Name _____ Tel. No. _____

Address _____ City _____ ZIP _____

PROBABLE LIST OF HISTORIC BUILDINGS FOR HOME TOUR:

PRIVATE HOMES:

Harmon-McNeill House--1887 two-story Eastlake/Queen Anne mansion moved in 1986 and in the process of restoration

Dr. Whitson House--Large two-story 1911 Craftsman home recently moved and three-quarters restored.

Duggan House--ca. 1900 two-story Colonial Revival home with turret and a fine staircase. Moved in 1987 and soon to be restored.

Alexander House--Spacious 1912 two-story Craftsman Bungalow which is almost completely restored.

Chilton House--1883 two-story Italianate House, moved in 1986 and approximately half restored. It has had few architectural changes.

Robinson House--Constructed in 1911, this large two-story Craftsman Bungalow has been rehabilitated and refurbished as a law office.

Cleaver House--ca. 1898, this Colonial Revival home was one of the first homes refurbished in French Park.

Morrow House--1909 Craftsman Bungalow recently restored.

Crookshank House--Recently redecorated and beautifully furnished, the 1903 home of Clarence Crookshank, a prominent local banker, is a two-story Colonial Revival home with some Craftsman elements.

Williams House--Built in 1922 in the Spanish Colonial style, this home is in the process of restoration.

Hickox House--Two-story Craftsman House, built in 1909, which has been almost completely restored.

MUSEUMS AND CHURCHES

Dr. Howe-Waffle House--one of the finest Queen Anne Victorian houses in Orange County, this house was finished in 1889, restored in 1976-1987, and is now a house museum.

Episcopal Church of the Messiah--celebrating its 100th birthday this year, this beautiful and rare Coxhead-designed Shingle-style church has always been well-maintained.

Old Orange County Courthouse and Museum--Recently restored to its original grand style, the Courthouse features a museum and restored second floor and first floor hallways.

DOWNTOWN HISTORIC DISTRICT-- a tour booklet featuring buildings in the Downtown Santa Ana Historic District will be available for those who would like to take an exterior walking tour of the restored commercial district in Downtown Santa Ana.

1989-90 EXECUTIVE BOARD

The general membership of our organization unanimously elected the following persons to serve on the 1989-90 Executive Board:

President Scott Morgan
Vice-President George Heaney
Secretary Judy Davis
Treasurer Laura Grady
Directors:

Diann Marsh, Royal Spurrier, Max Becker, Connie Becker, Greg Lester, Rob Rusby

Members and visitors are welcome to attend our monthly board meeting in the Dr. Howe-Waffle House dining room on the third Wednesday at 6:30 p.m.

DONATION

Mr. and Mrs. Paul Snow, members of a pioneer Tustin family, have given us a lovely pair of gold-rimmed souvenir glasses with the name Santa Ana etched on the sides. We would like to thank the Snows for their donation and wish them much luck in their new home in Northern California.

HISTORIC MAPS

Our organization has available 100 of the Orange County Historic Maps. If you have not

seen this fine product, produced by the Orange County Historical Commission, the Automobile Club of Southern California, and Centennial Inc., stop by the Dr. Howe-Waffle House on Tuesdays from 10:30 a.m. to 1:30 p.m. and on the 3rd Saturday from 11:00 a.m. to 2:00 p.m. for a close look. A usable bonafide highway map, it highlights a list and descriptions of 143 historic sites in our County, including the Dr. Waffle House and the Historic French Park District. This souvenir map is a fundraiser for our group and retail for \$4.00 each.

COMMUNITY IN ORANGE COUNTY: CAN HISTORIANS MAKE A DIFFERENCE?

Chapman College and the California Council for the Humanities will sponsor a free historical conference on Saturday, May 6th, from 9:00 a.m. to 4:00 p.m. All sessions will take place in the Little Theatre at Wilkinson Hall (north of Administration Building).

From 11:30 to 1:30, an authors signing party for the Proceedings of the Conference of Orange County History will be held.

Please plan to attend this important event. Dr. Lee Estes has organized this conference. For further information, please call the History Department at Chapman (997-6621).

The Santa Ana Historical Preservation Society would like to invite you to join us. We welcome anyone who has an interest in Santa Ana or Orange County history. Our members are our most valuable asset.

NAME _____ TEL. NO. _____

ADDRESS _____ CITY _____ ZIP _____

Individual: 10.00
Organization: 20.00

Family: 15.00
Supporting: 50.00

Please send to : The Santa Ana Historical Preservation Society
120 Civic Center Drive West
Santa Ana, CA 92701



120 WEST CIVIC CENTER DRIVE
SANTA ANA, CALIFORNIA 92701



MS JUDY DAVIS
1850 GREENLEAF #B
ANAHEIM CA 92801